

Spinnaker Launcher! 1/30/76

SIDEWINDER NEWSLETTER

PUBLICATION OF THE UNITED STATES SIDEWINDER ASSOCIATION

January 1976

President - Walter Schroth
41 West High Street
Union City, Pa. 16438

Publisher - 2M Advertising
720 Nevada Drive
Erie, Pa. 16505

Chief Measurer - Larry Booth
337 Bloomfield Ave., Apt. 17
Johnstown, Pa. 15904

THE SCORE

Fleets - 17

Paid Members - 254

Highest Sail Number - 2000

Secretary - Pat Schroth
41 West High Street
Union City, Pa. 16438

Hi Sailors,

Our beautiful bay at Erie is full of ice boats and skaters scooting back and forth and many little ice fishing shanties. Our yard is full of snow and the boats are propped up in the garage. It was 10 below zero on the porch this morning.

But, have faith! "When winter comes can spring be far behind"?

We have it on good authority that Fleet #7 intends to begin sailing in March. It is their avowed intention to carry all of the trophies back from the National Championship Regatta at Cadillac this summer. Cadillac sailors, of course, have not agreed to allow this.

The next issue of the Newsletter, due out in March, will be sent to all Sidewinder owners of record whether they have been active or not. We will ask for our annual dues of three dollars and try to paint a good picture of the joys of being an association member. So you, who are the salt of the earth, please help us to breathe life into the many people you know who own a Sidewinder but haven't joined our happy throng.

2M Advertising Agency, 720 Nevada Dr., Erie, Pa., will be in charge of publishing the Newsletters. Four more issues are scheduled for 1976 as follows:

MATERIAL DUE DATES:

March 5, 1976
May 7, 1976
July 9, 1976
September 10, 1976

PUBLISHING DATES:

March 26, 1976
May 28, 1976
July 30, 1976
October 1, 1976

Information for each issue must reach your secretary, Pat Schroth, by the material due date, three weeks in advance of each publishing date. Late material will be included in the following issue. Your contact with 2M will be Linda Luck, office manager.

On to the facts.....

*****THE FLEETS*****

The last newsletter listed the fleet areas where charters have been drawn up. The list is worth repeating. The list is also worth enlarging.

- | | |
|----------------------------------|-------------------------------|
| #1 - Erie, Pennsylvania | #10 - Richmond, Virginia |
| #2 - Charleston, South Carolina | #11 - (North-Eastern) Ohio |
| #3 - Albuquerque, New Mexico | #12 - Norman, Oklahoma |
| #4 - Columbus, Ohio | #13 - Cross Lake, New York |
| #5 - Detroit Area, Michigan | #14 - Oklahoma City, Oklahoma |
| #6 - Monroe, Michigan | #15 - Cadillac, Michigan |
| #7 - Lake Glendale, Pennsylvania | #16 - Traverse City, |
| #8 - Cincinnati, Ohio | #17 - Wharton, New Jersey |
| #9 - Belton, Texas | |

*****DISTRICT SECRETARIES*****

Everything in this Association is VOLUNTEER; we do it for FUN. There are many vacant jobs, particularly - each state needs a chairman. There is no set formula - just do what you think will make the club go. Some of you are alone in your states -- why not participate?

MICHIGAN - Ken Walker, 36733 Rowe, Sterling Hgts., Mich. 48077

OHIO - Garnett J. Lee, 1420 Glendale Ave., Dayton, Ohio 45406

OKLAHOMA - Ben Sanders Jr, Rt.1, Box 105, Pawhuska, Okla. 74056

PENNSYLVANIA - Larry Booth is moving - needs to be replaced.

NEW YORK - Earl Selover, 410 Beech St., Rome, N.Y. 13440

NEW ENGLAND - Lin Perry, 420 Shore Rd., Monument Beach, Mass. 02553

*****YOUR BOAT WEIGHT*****

In the Minutes of the Annual Meeting, see item #7. You are asked to please weigh your boat before fall-winter storage, without main sail or spinnaker, WITH EVERYTHING ELSE. Nobody knows until this has been done how wide the variation in weight is, nor how many are rather high or rather low ect. ect. Also, no decision has been hinted as to what sort of weights could be added to even things up some, even whether the differences are enough to bother about. Your cooperation is very IMPORTANT to the prevention of ill-will. Put your name address, zip and sail numbers, boat weight on a POSTAL CARD (for neatness) and send it to Larry Booth as National Measurer. To get your boat weighed, ask around. Some boat clubs have scales for weighing boats regularly, or farm supply stores, some factories, ask 'till you find a way. A good sized group of your fellow-sailors care about this.

As to the above - better late than never.

Much better!

*****REGATTAS*****

here is what we have learned so far....

- May Spring Regatta on either Lake Hopatcong or Swartsweed Lake. Contact Bev Fraser, 61 E. Shawnee Trail, Lake Shawnee, Wharton, N.J. 07885. More details next Newsletter.
- June 5-6 Annual Erie Open (all Sidewinder sailors welcome) at Erie Yacht Club. Contact Walter Schroth for now.
- June 12-13 Berlin Yacht Club Open (3 is a fleet, pre-registered) on Berlin Reservoir near Akron, Ohio. Details later.
- June 26 One day regatta on Lake Marlburg in Codorus State Park near Hanover, Pa. Sponsors are the Pinchot Sailing Club assisted by the Lake Marlburg Sailing Association. Five races each for Sidewinder and Sunfish. Contact William W. Millar, 241 Briggs St., Harrisburg, Pa. 17102. Phone - (717) 236-7593
- July 24-25 National Championship and Annual meeting of the Association at Cadillac-Mitchell Yacht Club, Cadillac, Mich. Contact Bob Cole at P.O. Box 329, Cadillac, Michigan 49601.

Two regattas are in the planning stage. Earl Selover is organizing a New York District (only) Regatta. Lloyd Schrack is thinking about an open regatta for those who live within driving distance of Niagara Falls, N.Y. Contact Earl at 410 Beech Street, Rome, N.Y. 13440 Contact Lloyd at 9306 Rivershore Drive, Niagara Falls, N.Y. 14304

*****PROPOSED AMENDMENT*****

Per September Newsletter: page 5, Minutes of the annual meeting item 11. "After extended discussion, motion was passed 22-9 to submit to full national membership balloting an 'addition to the prohibitions' worded to match the By-Laws with this intent: 'Nothing attached may extend beyond the profile overhead view, that is, outboard of the rub rails (excluding whisker pole and rudder)'".

Bev Fraser
61 E. Shawnee Trail
Lake Shawnee
Wharton, N.J. 07885
Sept. 3, 1975

U.S. Sidewinder Association
Pat and Walter Schroth
41 West High Street
Union City, Pa. 16438

Dear Pat and Walter:

First, we would like to thank you and everyone involved, particularly Fleet #7, for making the 1975 Sidewinder National Regatta a pleasure for the sailors and their families who attended. I know everyone who came with Fleet #17 had a terrific time. It was very exciting for our families to be able to view the races.

There seemed to be some questions about the spinnaker launching tubes, on our boats, which were mounted up front, next to the jib furlers, on a stainless steel removable bracket. We assume the questions are because the brackets hang over the sheer line of the boats.

It is Fleet #17's opinion, that this is the only workable position a sock or tube assembly can be satisfactorily used and still be able to launch, gybe and retrieve the spinnaker on different tacks without fouling the halyards and sheets from both spinnaker and jib. We feel there is no other practical or functional place to stow a spinnaker on the Sidewinder.

The club does consist of more than the 34 boats which attended the Nationals, and we are willing to share our ideas with everyone who is interested. So we are enclosing illustrations from John Brunskill, #1707, Nils Demar, 622, drawn by Al Fraser, #1712 displaying our hardware and rigging for all the members to see. This way they can judge for themselves whether this handy arrangement (which cost less than \$10 to make) should be banned from our boats. These are only two drawings showing variations possible with this type of mounting. We are very interested in other members opinions for or against our spinnaker mounting. Please write:

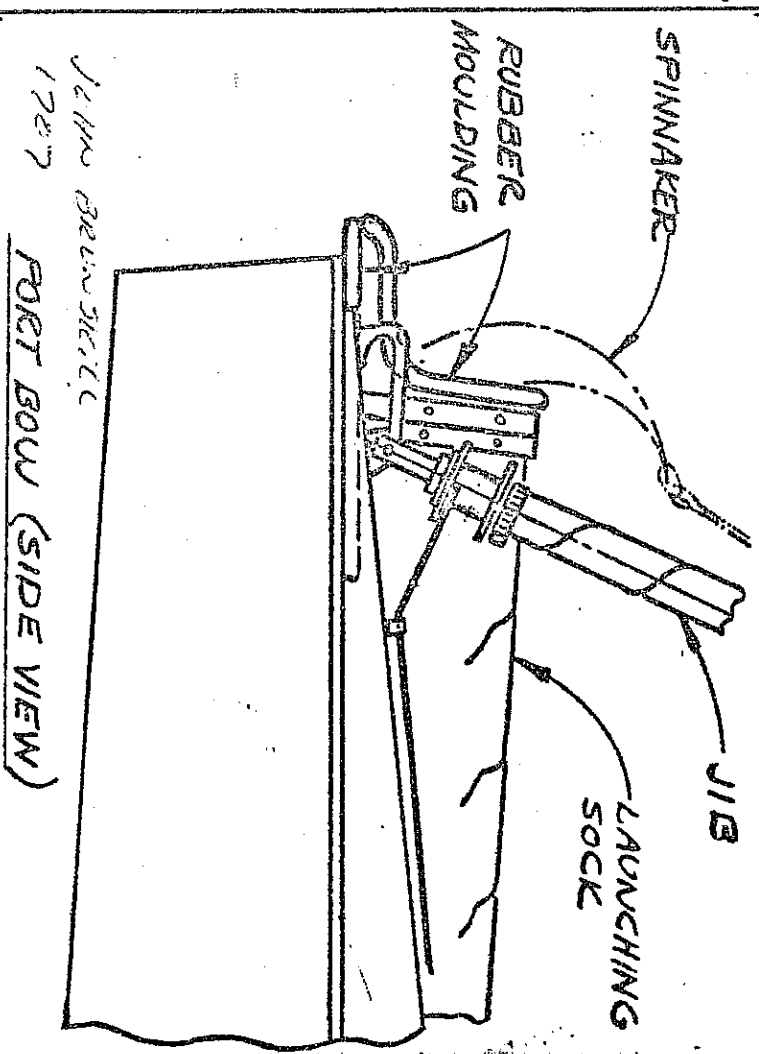
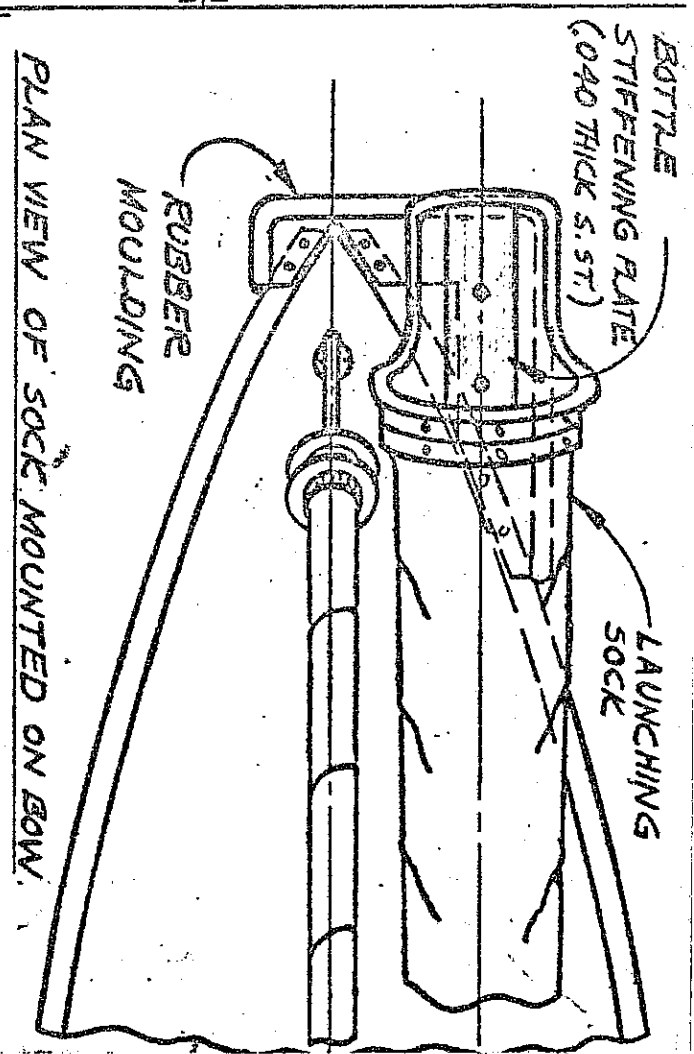
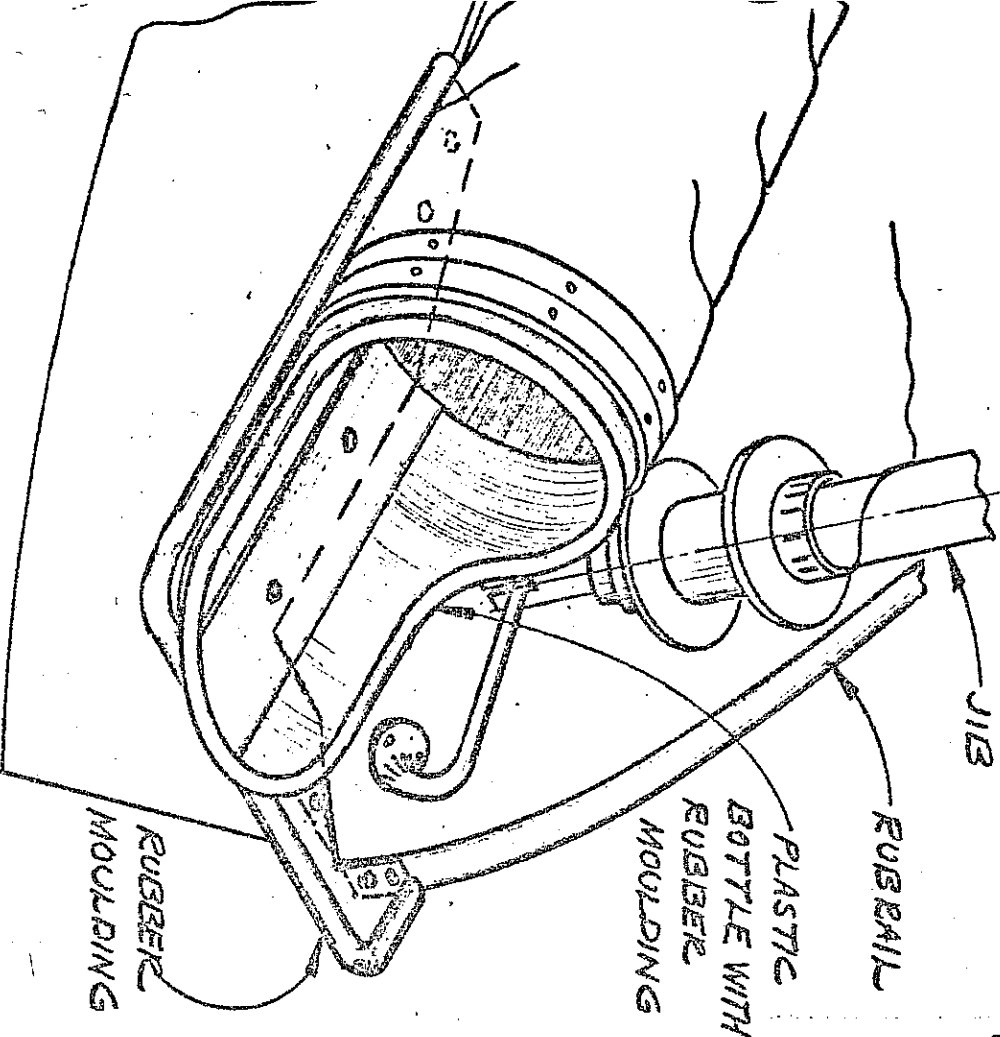
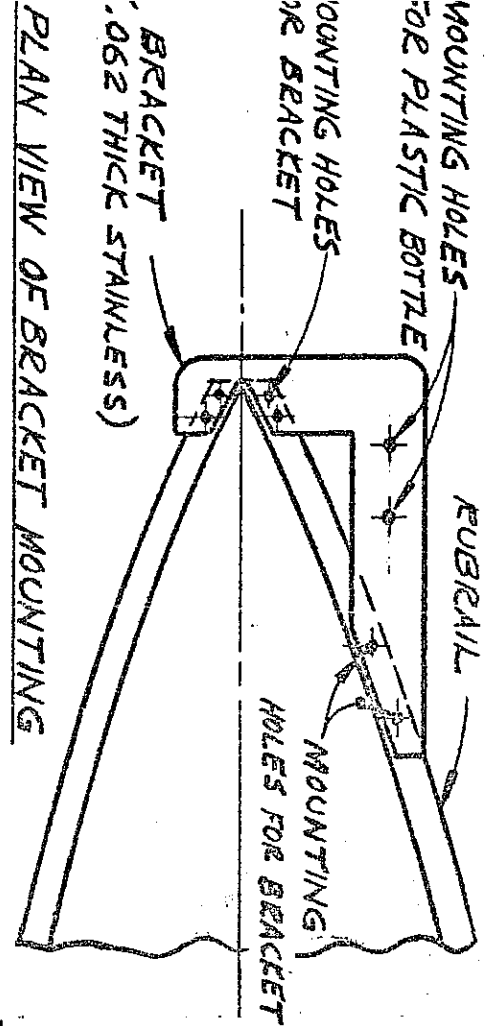
Fleet #17
c/o Nils Demar
43 E. Shawnee Trail
Lake Shawnee
Wharton, N.J. 07885

The future activities of Fleet #17 includes a preposed Spring Regatta on Lake Hopatcong or Swartsweed Lake. We would appreciate hearing from Sidewinder Sailors interested in attending.

Again, we would like to thank you all for contributing to a very pleasant summer of sailing.

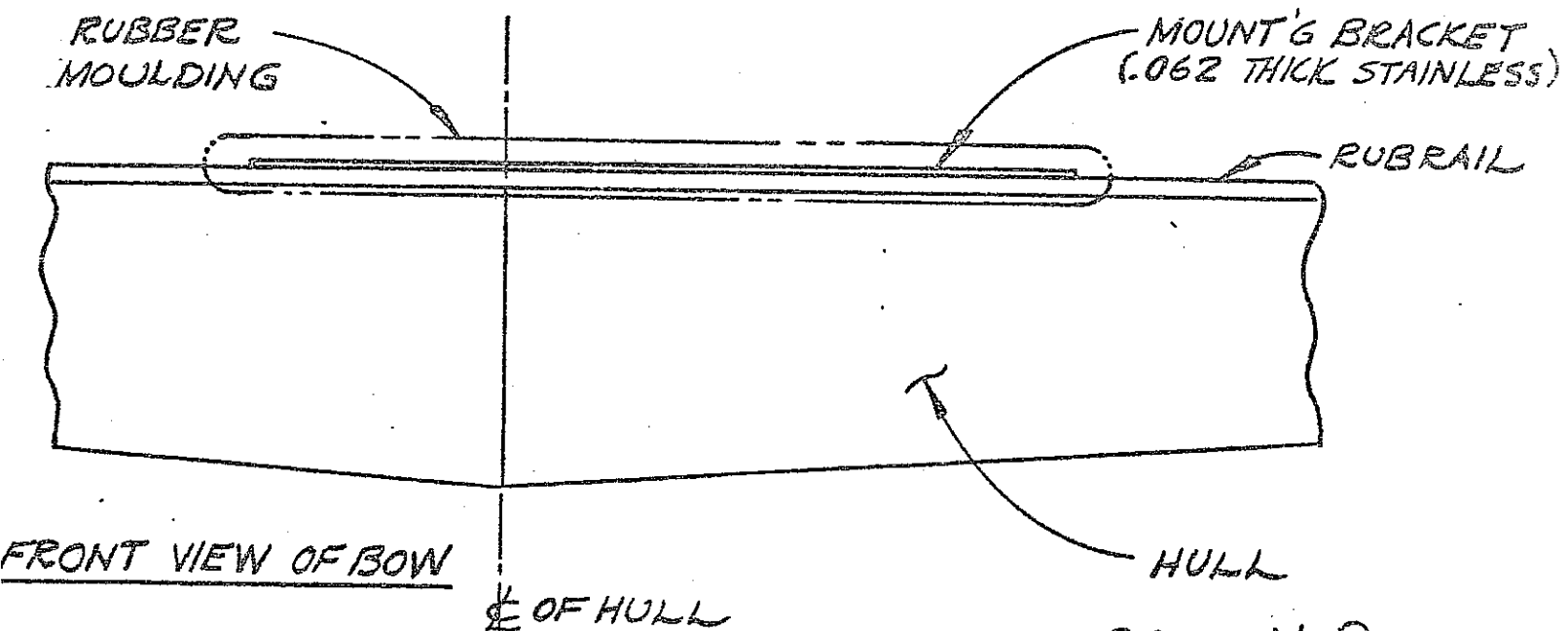
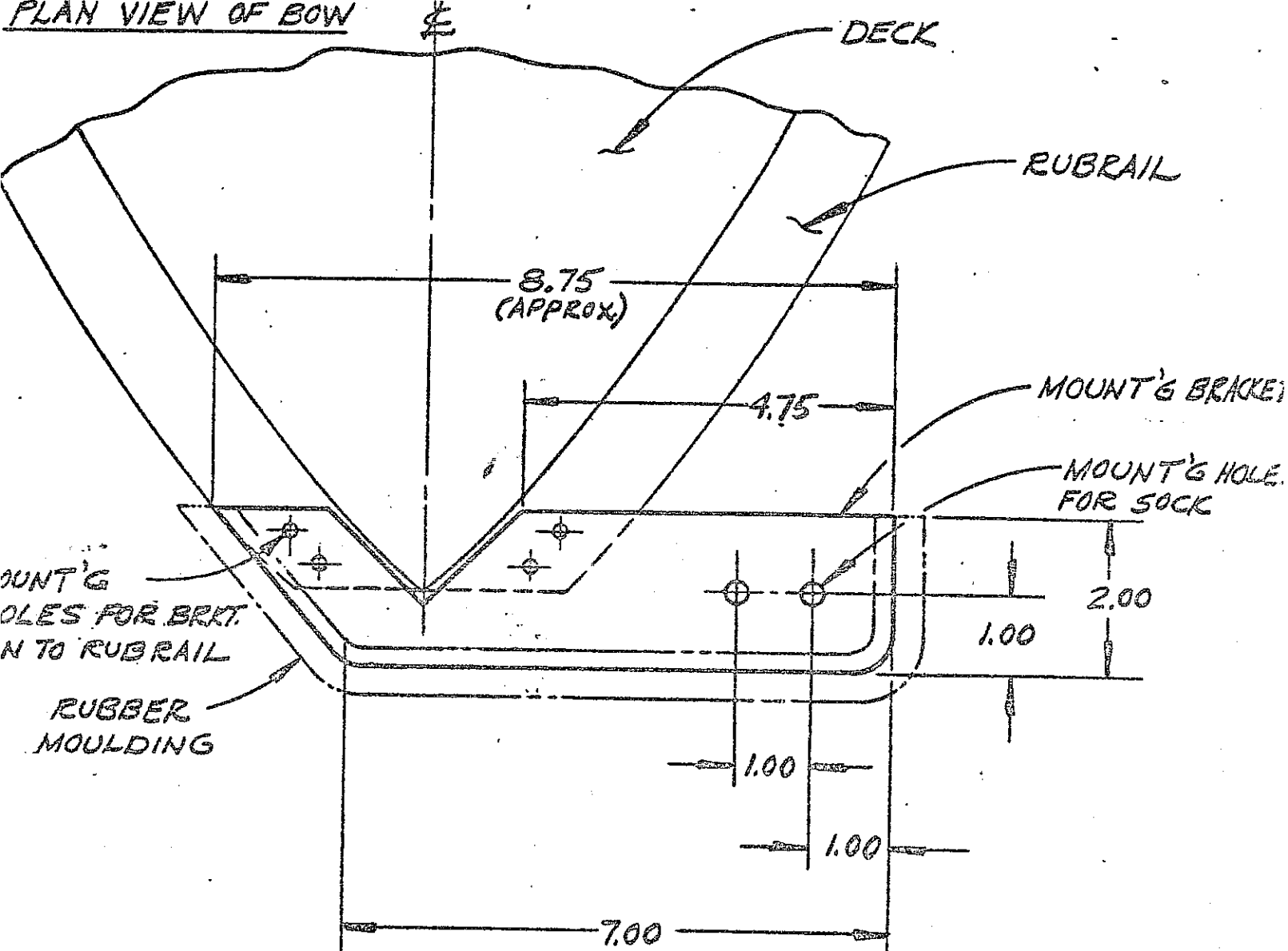
Your friend,

Bev Fraser



TITLE: SPINNERAKER LAUNCHING SOCK MOUNTING ON DECK OF SIDEWINDER.

PLAN VIEW OF BOW

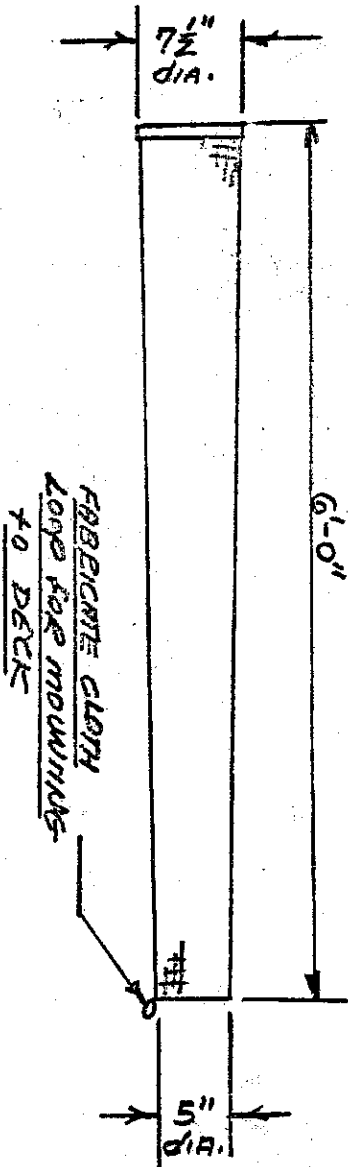
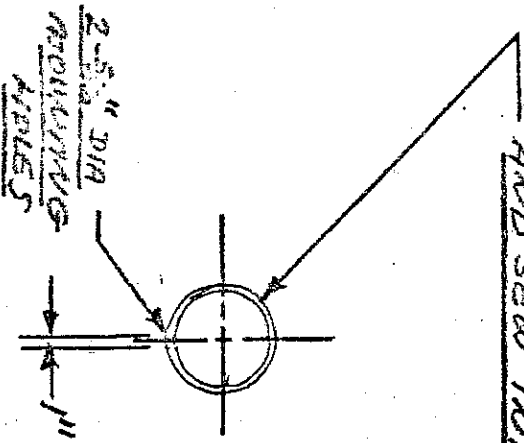


622 N. Demar

TITLE: MOUNTING BRACKET FOR SPINNAKER LAUNCHING SOCK ON DECK OF SIDEWINDER

9/1

SHORLESS STEEL OR PLUMBING
PIPE (55MIGID) 26" LONG AND
1/2" WIDE OVERLAP AT HOLES
AND SEW INTO SOCK.



FABRICATE SOCK FROM COUPLERS OR OTHER
SUITABLE MATERIAL - DOUBLE SEW
ALL SEAMS - DIMENSIONS MAY BE
VARIED TO MEET INDIVIDUAL
REQUIREMENTS

SPINDAKER LUNCHBOX
SOCK FOR SPINCHBOX

SCALE 3/4" = 1'-0"

"HERE WE GO AGAIN"

Once again someone has found a clever way of getting around the By-Laws of the Association to come up with more 'go fast' gadgets and junk on their boats.

Recently an overwhelming number of the Association's members voted not to allow any kind of spinnaker launcher which altered the jull or deck shape. The main objective of this ruling was to prohibit anyone from cutting into the deck for the purpose of constructing a thru-the-deck launcher. It was also intended to discourage anyone from trying any other kind of spinnaker contraption. But sure enough, that didn't stop two sailors from attempting to interpret the rules to suit their needs.

They showed up at the Nationals with spinnaker launchers mounted on a fearsome looking steel angle iron that jutted out from the bow like a medieval battering ram. "Ah, but.... , they said, it doesn't alter the hull or deck shape". Says Who?

To alter something means to "make different in details but not in substance"; to modify; to vary; to change in appearance". If a 6" to 12" piece of steel sticking out of the side of a boat doesn't change its details or appearance, I'll eat the damn thing!

Even beyond the technical question there is the question of safety. it's bad enough getting hit by a blunt fiber glass bow. Could you imagine what a steel angle iron would do to your boat?

At the annual meeting 29 of the 35 sailors voted against these spinnaker launchers and any other device that protruds out-board of the gunnels. As the Chief Measurer of our class I also strongly believe that they should be prohibited, as well as mainsheet travelers (which were also voted down at the meeting) and any other junk and gadgets that are not already expressly allowed in the class by laws.

Larry Booth

FROM JEFF YOUNG - FLEET # 7 - LAKE GLENDALE

August 19...Sidewinder Sailors, every year we see the same thing at the annual Sidewinder meeting. The bulk of the meeting consists of arguments pro and con about different individuals' refinements on their Sidewinder. Undoubtably, the purpose of these changes are to increase boat speed. I can appreciate these changes, such as launcher tubes, Cunningham devices, and mainsheet travelers, since we sail a basically stock boat but have sailed a 5-0-5 which has all the refinements, plus.

I believe the prevailing attitude of the Sidewinder class is to have boats of equal performance. This will promote keen competition and enable the skipper and crew with the finest skills to be determined.

Isn't this what the Sidewinder is all about? By installing a main sheet traveler or even a spinnaker launcher tube, doesn't this put a disadvantage on other sailors financially, as well as in boat speed? Fleet #7 has sailors who are not financially independent, yet can compete on an equal basis with the class because it is a basically stock class.

Instead of increasing your boat speed by putting in a main sheet traveler, why not improve your sailing skills to increase your boat speed? Hopefully our next annual meeting will consist of sailing tips instead of arguments.

P.S. I hope everyone had a great time at the Nationals at Lake Glendale!

Because Pat and I sail one of the many Sidewinders equipped with a spinnaker launching tube fastened to the foredeck, I will state our reasons for wishing to continue using it. That is to say, our launching tube extends forward of the luff pole and out over the side of the bow, which it must in order to clear the jib sail. What we have is a home-made substitute for the Flying Dutchman or Fireball tube launcher.

I want to make the point very strongly that a launcher gives no advantage whatever on a boat for boat basis while flying a spinnaker. The skilled spinnaker users will outdo the unskilled. Nor can the launching tube users set a spinnaker any faster than a practiced team.

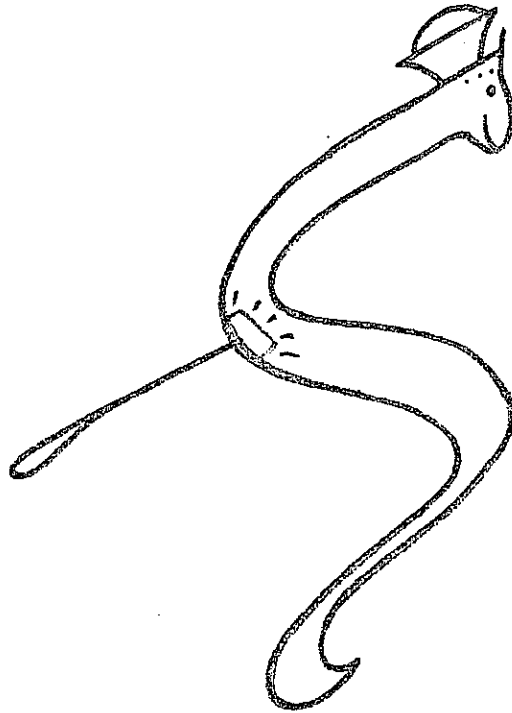
So that is the whole point of the case--a practiced team! Pat and I sail as a team most of the time and can fly the spinnaker with or without a tube. But I have attended several affairs where I used a Pickup Crew. The launcher made it possible to fly a spinnaker after a practice session. Without a launcher, I would have left the spinnaker on shore.

And to dwell on that point a little longer--many of my sailor friends don't sail nearly as often as I do. They place great value on a launcher as they change crews with skippers. Without launchers they would not use spinnakers at all.

To sum up, I do not agree that having a launcher project over the edge of the deck is hazardous and I think the launcher is a desirable device.

Walter Schott

Richard England, who moved from Ohio to the Great Northwest and wrote back after sailing there inquiring about wind-indicators. Larry Booth wrote a clever statement that he likes the kind on top of the mast, gets a crick in his neck but the best information for sailing. Your clutter-collecting secretary lost or mislaid these letters, thus the summary. When the secretary is serving as crew, she likes red yarn on the port side and green yarn on the right. Thin yarn for drifters, thick yarn for a good blow. Her skipper dreams of the feather-on-wire tell-tales seen in marinas sometimes. Just about starting time at a race, the crew must unwind the yarns. Some text book somewhere said the best sailors feel the wind on the back of the neck. End of comment.



Hear ye hear ye ALL HANDS A T T E N T I O N

Needlework exhibits with awards.....at all regattas Pat gets to in 1976. Include snake and sailboat in design. All entries to be made of cloth or thread or yarn. Save batik to go with painting and such another season. Open to Members and Associate Members. Thus, send dues for all needleworkers. Pre-register please.

Ideas: needlepoint, knitting with design, crewel, embroidery, crochet, etc. For sweaters, hats, pants, pictures, footstools, pillows, etc. Any color scheme you like. No sexism, not limited to women!

How to pre-register: post card to secretary.